

# BE WOWED IN WELLINGTON

28 SEPTEMBER - 2 OCTOBER 2025



We invite you to be wowed in Wellington at the famous World of WearableArt show, to marvel at these artists who make all things fabulous from anything mundane plus enjoy our own shows, tours and the Wairarapa.

DAYS	HIGHLIGHTS	GROUP SIZE	MEALS	MOBILITY
5 Days	World of WearableArt, Greytown, Martinborough, Parliament, our own shows	1 Coachload	All Breakfasts 1 High Tea 3 Lunches 3 Dinners	Easy Tour



# BE WOWED IN WELLINGTON

## SPECIAL FEATURES:

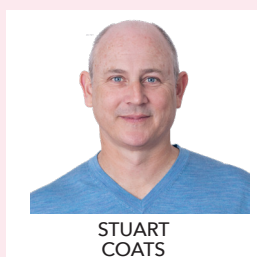
- The amazing, captivating World of WearableArt show.
- 5 day tour of Wellington and surrounds, staying at the amazing Intercontinental Hotel, enjoying an array of interesting flavours including WOW, Wellington and the Wairarapa areas with food, fashion and fun along the way.
- Escorted by Lynette Martin, Stuart Coats, John Bayne and Emma Sloman with 2 great musical events: **100 Glorious Years of Song** and **The Golden Era of Musicals**.
- Tour Martinborough to one of its famous vineyards and wander around cute Greytown and fossick in its myriad of great shops.
- Tours to Weta Workshop, Parliament and Te Papa.
- Operatunity's unique blend of organised, musical and special activities and free time to enjoy your day, meet friends or go shopping!



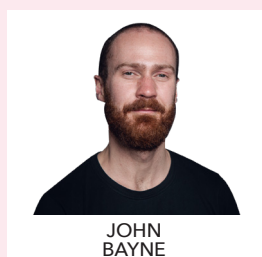
## OUR HOSTS:



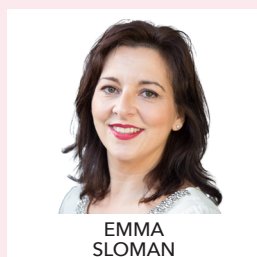
LYNETTE  
MARTIN



STUART  
COATS



JOHN  
BAYNE



EMMA  
SLOMAN



PARLIAMENT BUILDING

## TRIP ITINERARY

Experience the Exceptional:

### ● SUNDAY 28 SEPTEMBER 2025 (L, D)

#### Intercontinental Hotel (4 nights)

We pick you up from the airport from your various destinations around New Zealand and meet this morning at the Intercontinental Hotel.

#### Highlights Include:

- A City Tour of Wellington including Wellington central area, a trip to the top of Mt Victoria, with its great views over Wellington, lunch at Bellamy's before a visit and tour of the Parliament Buildings.
- Tonight, we have our gala dinner, accompanied by laughter and music from our singers entitled **100 Glorious Years of Song**, featuring songs from great musicals!

### ● MONDAY 29 SEPTEMBER 2025 (B, L)

#### Highlights Include:

- Tour to the Martinborough area.
- Visit to the famous town of Greytown with time for shopping in their lovely array of boutique stores, ranging from homewares, fashion, furniture and antiques.
- Wine tasting and lunch at a vineyard in Martinborough.





SINGER STUART COATS



WETA WORKSHOP



WORLD OF WEARABLEART SHOW



FABULOUS COSTUMES

- Visit to Stonehenge Aotearoa, a fully scaled replica of Stonehenge, our tour will include a talk about how stones were used to track the sun and moon and about the solstice and equinox.
- Evening off to meet friends or enjoy the myriad of cafes and restaurants close to our hotel.

## ● TUESDAY 30 SEPTEMBER 2025 (B, A/T, D)

### *Highlights Include:*

- An historic tour including the beautiful houses of Kelburn, visiting Katherine Mansfield's House and Old St Paul's, finishing at the Wellesley Boutique Hotel for an early afternoon high tea.
- Dinner at The Boatshed, located right in the heart of Wellington waterfront with its spectacular views of the inner harbour.
- Our very special event combines this beautiful setting with great food and music from our escorts ***The Golden Era of Musicals***.

## ● WEDNESDAY 1 OCTOBER 2025 (B, L, D)

### *Highlights Include:*

- A tour to Weta Workshop this morning and then lunch overlooking the beautiful Wellington Harbour.
- A visit to Te Papa Museum. Te Papa is New Zealand's national museum, renowned for being bicultural, scholarly, innovative, and fun.
- Early dinner at a local restaurant this evening before we transfer to our premium event, the World of WearableArt Show (WOW).
- WOW is an annual non-stop spectacular held in Wellington where artists and designers from New Zealand and all around the world enter garments that are presented in a unique two hour show. Each garment has been made with exceptional skill and often out of the most bizarre of materials. But what makes it so spectacular apart from the incredible clothes is the show itself, amazing lighting, music and presentation which leaves you breathless!

## ● THURSDAY 2 OCTOBER 2025 (B)

Following breakfast this morning we make our way home to our various destinations, following a wonderful few days of fashion, food, fun and musical experiences in vibrant Wellington with a chance to meet new people.



## THIS TRIP INCLUDES:

- Tickets to World of WearableArt Show.
- 4 nights' accommodation at the beautiful Intercontinental Hotel, Wellington.
- Tours of Wellington including Parliament, Mt Victoria and tour to Martinborough, wine tasting and shopping in the quaint Greytown.
- Special tours including Weta Workshop, Parliament Buildings and Katherine Mansfield House.
- Two great musical events from our escorts: **100 Glorious Years of Song** and **The Golden Era of Musicals**.
- All breakfasts, 3 lunches, 3 dinners and 1 high tea, taxes and portage.
- Escorted by Lynette Martin, Stuart Coats, John Bayne and Emma Sloman.

**PLEASE NOTE:** As our travellers are coming from all over NZ, airfares are not included. If you require us to book your flights at an additional cost, please contact us.

## EASY TOUR

This tour will suit people with a stick, but not a walker or in a wheelchair. You will be required to walk to get from place to place and stand in museums and gardens, but it is designed to be an easy tour with lots of time to rest, travel on a coach and walk easy leisurely distances. You will need to be able to get on and off a bus with ease. If you are unsure, please ring the office to discuss your suitability for our tours.

## IMPORTANT INFORMATION

- All itinerary details are subject to change, but changes will be replaced with a comparable or better option.
- Initial & Second deposits are fully refundable up until final balance due date, minus an administration fee of up to \$500 plus any non-recoverable costs.
- All monies are non-refundable at final balance due date. This becomes an insurance claim.
- Bank transfer payments incur no surcharge. Credit card payments incur surcharge of 1.5%.
- Travellers need to be independently mobile and fit to travel.
- Bookings will only be accepted with initial deposit & booking form.
- All travellers must obtain comprehensive travel insurance for international travel and insurance for domestic travel is recommended.
- Please refer to our terms and conditions on booking form.



**\$3295** PER PERSON  
TWIN SHARE  
SINGLE ROOM SUPPLEMENT ADD \$850

INITIAL DEPOSIT ON BOOKING: \$1200  
FINAL BALANCE DUE: 10 JUNE 25



VERSION DATE 09/04/25